

TATTERSALL PARK NEW RETAIL DEVELOPMENT

Highway 280/119 • Birmingham, AL 35242

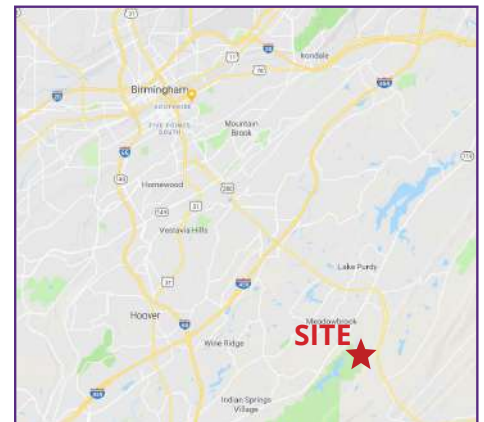


RETAIL

space for lease

Property Information

- ▶ Publix opening November 2019
- ▶ Traffic Counts:
 - ▶ Highway 280: 63,320 VPD
 - ▶ Highway 119: 14,200 VPD
- ▶ Direct access to high-income neighborhoods
- ▶ Easily accessible to Hwy 280 and Hwy 119



Demographics	1 mile	3 mile	5 mile
Population	5,055	37,502	73,070
Average HHI	\$124,632	\$122,309	\$123,712
Daytime Pop	8,687	37,131	75,507

All information furnished with respect to the subject matter has been obtained from sources deemed reliable. No representation or warranty as to accuracy thereof is made and such information is submitted subject to change in price, omissions, errors, prior sale or withdrawal without notice.

FULLY LEASED



Commercial Real Estate Specialists

Contact:

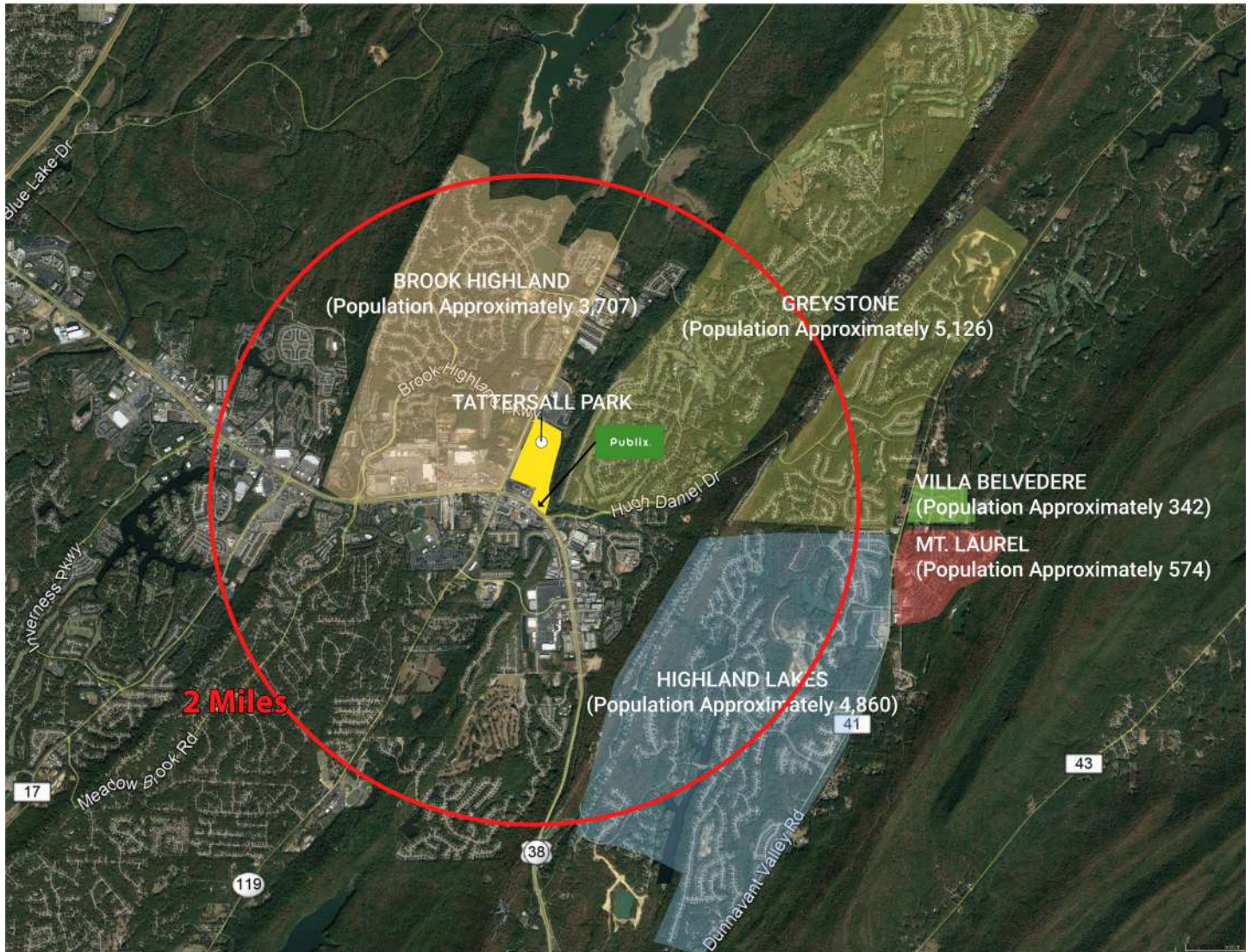
Blake Thomas

bthomas@southpace.com

205.326.2222

TATTERSALL PARK NEW RETAIL DEVELOPMENT

Highway 280/119 • Birmingham, AL 35242



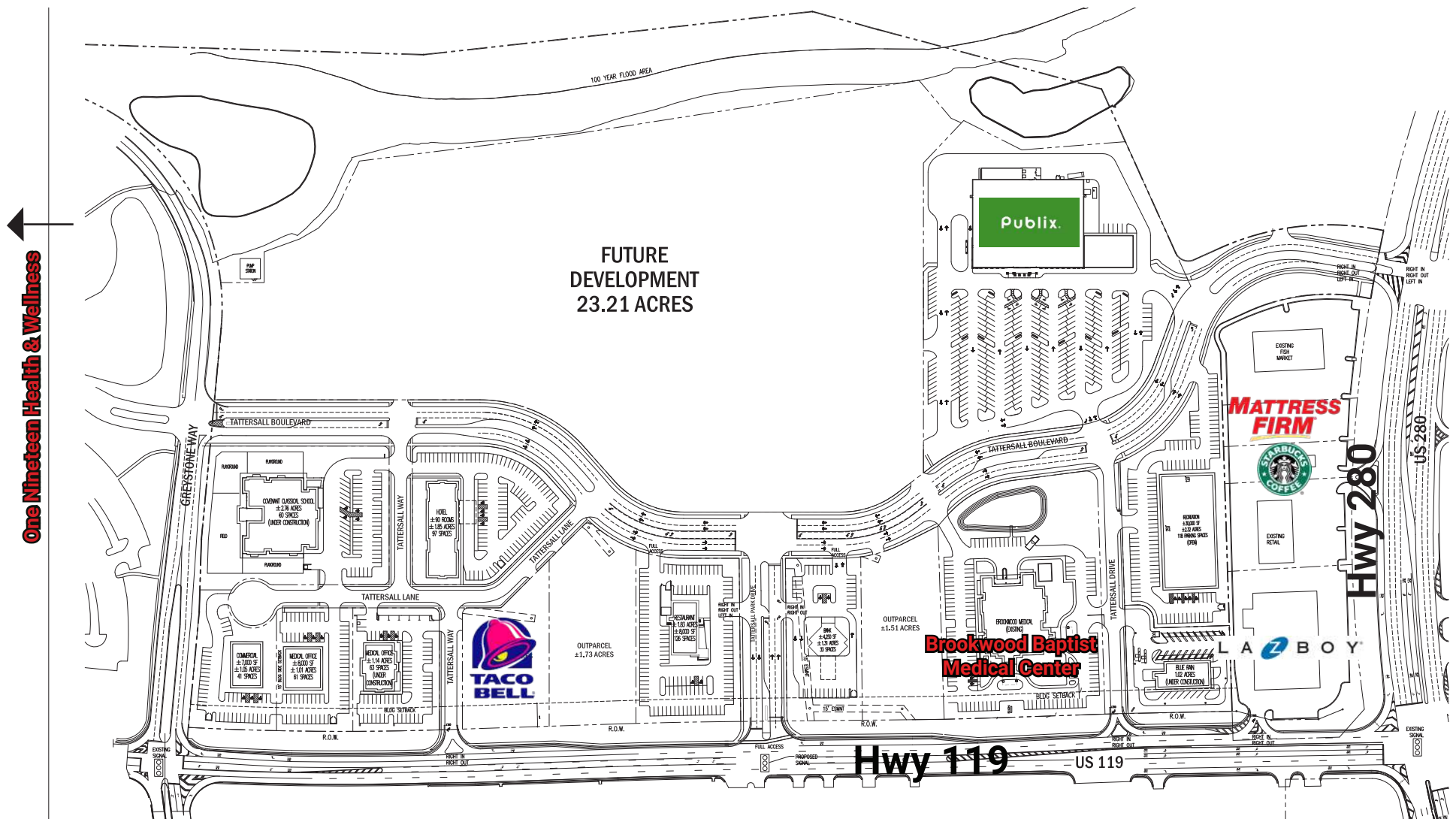
TATTERSALL PARK NEW RETAIL DEVELOPMENT

Highway 280/119 • Birmingham, AL 35242

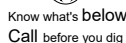


Highway 280/119 • Birmingham, AL 35242

Highway 280/119 • Birmingham, AL 35242



Highway 280/119 • Birmingham, AL 35242



Highway 280/119 • Birmingham, AL 35242



Lease Plan

SCALE: 1" = 10'-0"



US Highway 280 & Highway 119
Hoover, AL : C&P Project #2161052 : 04/22/18

LP-01

TATTERSALL PARK NEW RETAIL DEVELOPMENT

Highway 280/119 • Birmingham, AL 35242

5-MINUTE DRIVE TIME

MARKETING PROFILE



SOUTHPACE PROPERTIES, INC.

KEY FACTS

9,011
Population



2.4
Average Household Size

41.8

Median Age

\$83,122

Median Household Income

ANNUAL HOUSEHOLD SPENDING

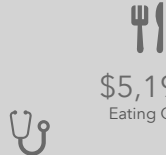
\$3,037
Apparel & Services



\$6,981
Groceries



\$240
Computers & Hardware



\$5,199
Eating Out



\$8,016
Health Care

Age Pyramid



EDUCATION

2%
No High School Diploma



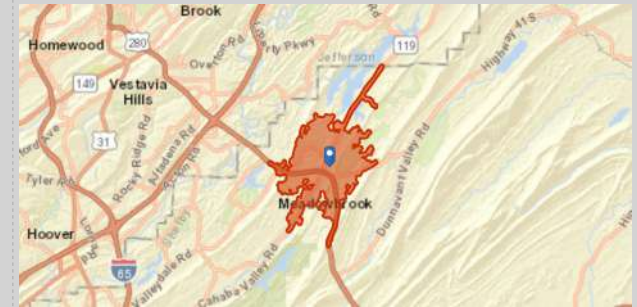
10%
High School Graduate



25%
Some College



63%
Bachelor's/Grad/Prof Degree



Tapestry Segments



1B Professional Pride
1,187 households

31.2%
of Households



5B In Style
731 households

19.2%
of Households



1A Top Tier
695 households

18.3%
of Households