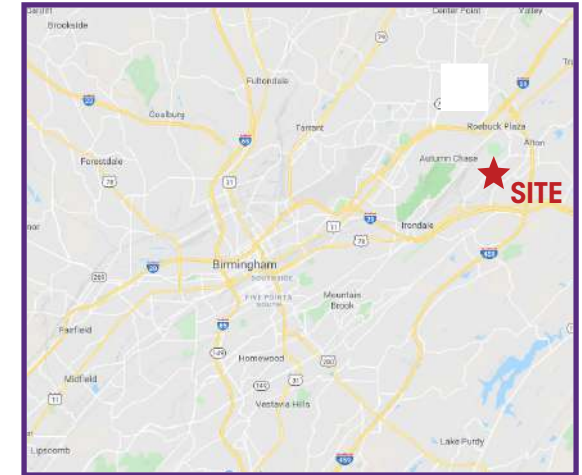


INDUSTRIAL LAND FOR SALE

1851 John Rogers Drive
Birmingham, AL 35210



DEVELOPMENT OPPORTUNITY

- ▶ 150± acres
- ▶ Land located in the city of Birmingham
- ▶ Excellent access to I-459, I-59, Hwy 11, & Hwy 78
- ▶ Located near high traffic corridors, Hwy 11, Trussville, & Hwy 78, Irondale
- ▶ Zoned I-3, Heavy Industrial
- ▶ Sewer available
- ▶ Parcel #s: 24-00-08-4-00-001.003
24-00-17-1-000-003.003

CALL FOR PRICING

- ▶ Approximately 1,705 SF of frontage on Eastern side of John Rogers Dr.

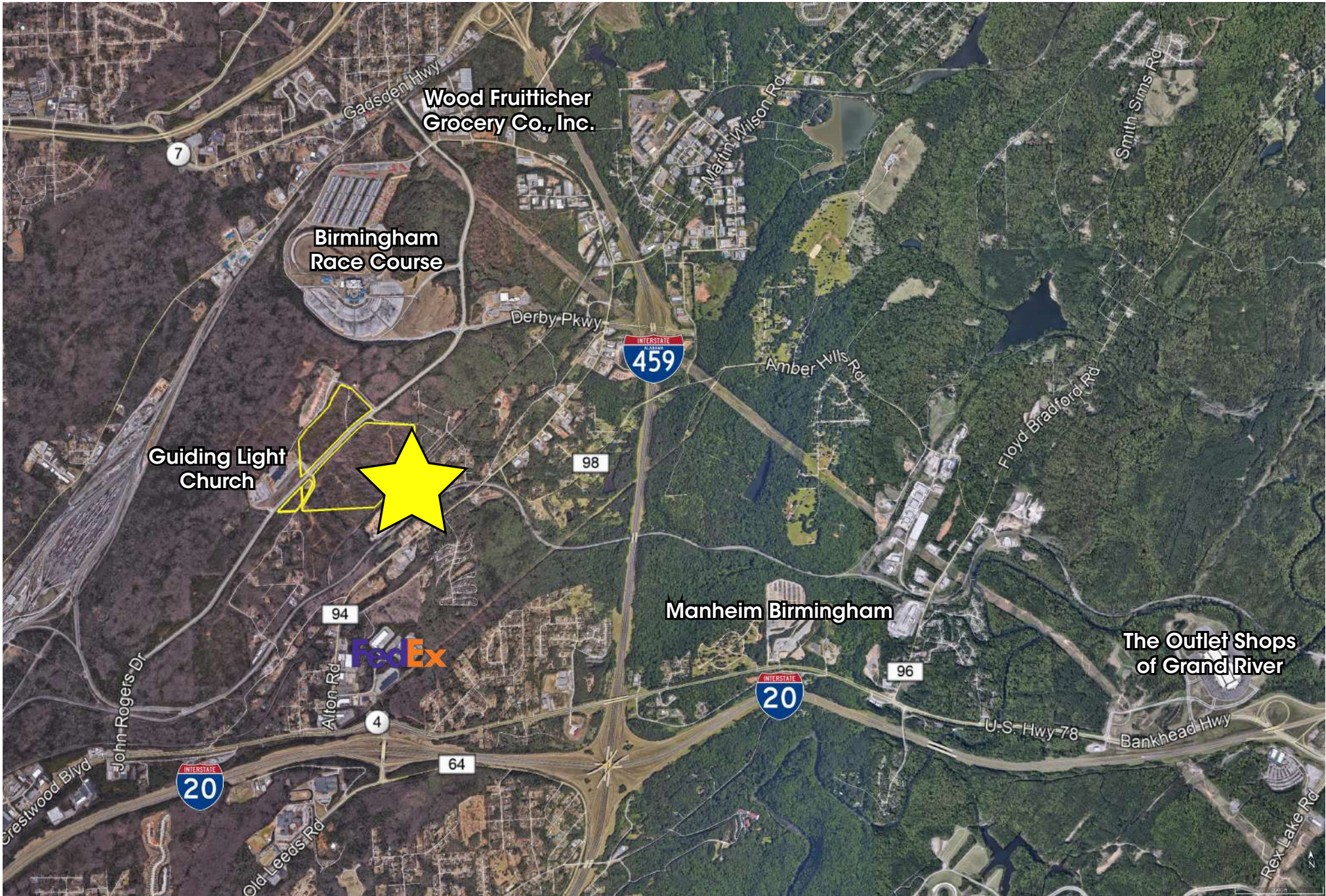


www.southpace.com

STEVE MORDECAI, CCIM
smordecai@southpace.com
205.326.2222

BILL MOSS, CCIM
bmoss@southpace.com
205.326.2222

All information furnished with respect to the subject matter has been obtained from sources deemed reliable. No representation or warranty as to accuracy thereof is made and such information is submitted subject to change in price, omissions, errors, prior sale or withdrawal without notice.



Wood Fruitficher
Grocery Co., Inc.

Birmingham
Race Course

Guiding Light
Church

Manheim Birmingham

The Outlet Shops
of Grand River