



# RETAIL SPACE FOR LEASE

10035 Memorial Pkwy SW  
Huntsville, AL 35803



## RETAIL FOR LEASE

- ▶ Space Available: ±2,307 SF
- ▶ Co-Tenants Include: Meineke Car Care Center & Cabinets To Go
- ▶ Space includes 4 bay doors
- ▶ Excellent visibility on Memorial Highway (46,257 VPD)
- ▶ Nearby Retailers Include: Lowe's, Sam's Club, Home Depot, and Publix

## CALL FOR PRICING

- ▶ Multiple residential communities in the surrounding area, including the Hays Farm development with 1,000+ new single-family homes and multifamily units.
- ▶ In close proximity to Grissom High School (1,952 Students)
- ▶ Pylon sign available
- ▶ 4.2:1,000 parking ratio

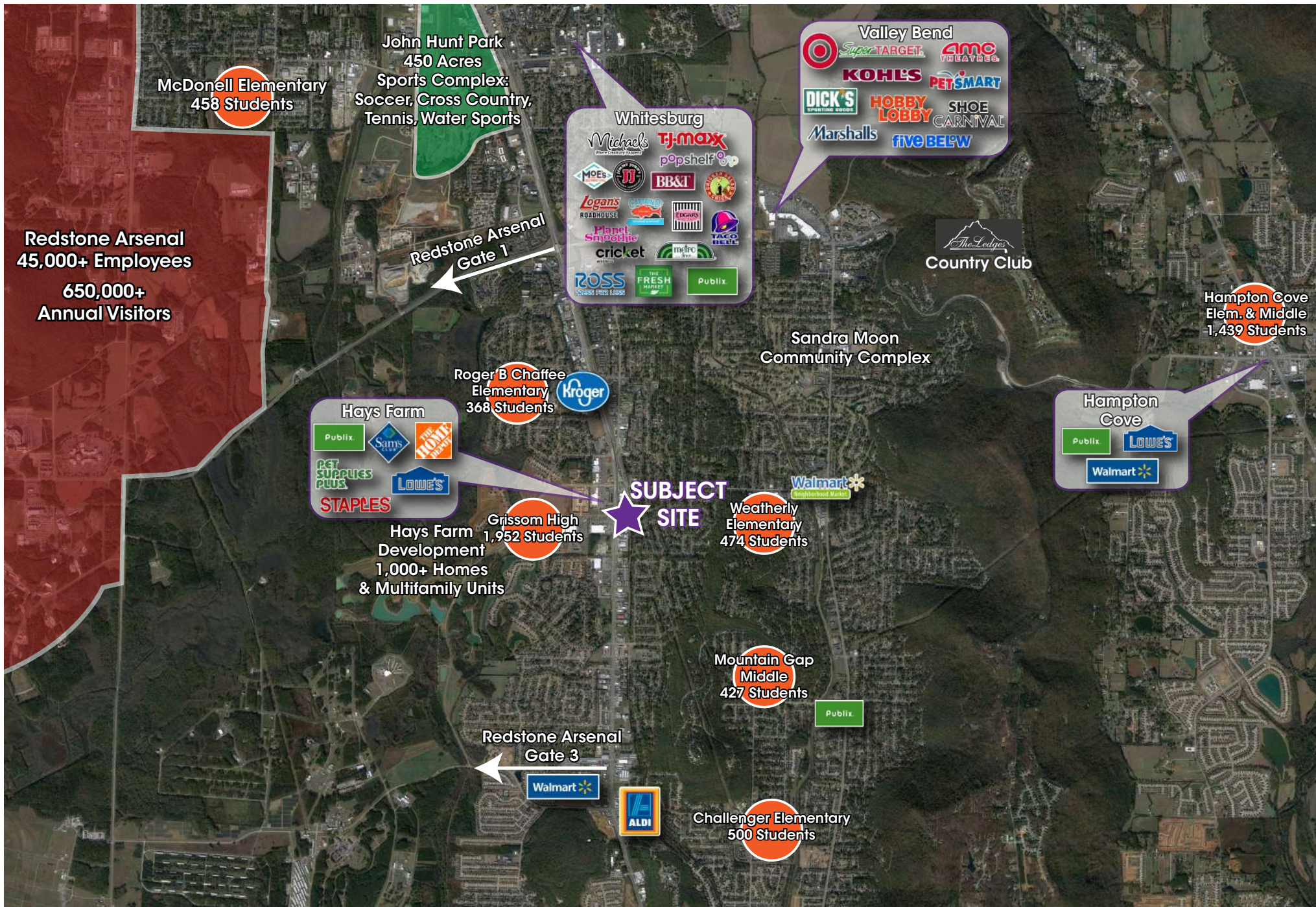


[www.southpace.com](http://www.southpace.com)

**STEPHANIE HILL**  
shill@southpace.com  
205.271.7228

**ALYSSA WATERS**  
awaters@southpace.com  
205.271.7250

All information furnished with respect to the subject matter has been obtained from sources deemed reliable. No representation or warranty as to accuracy thereof is made and such information is submitted subject to change in price, omissions, errors, prior sale or withdrawal without notice.



All information furnished with respect to the subject matter has been obtained from sources deemed reliable. No representation or warranty as to accuracy thereof is made and such information is submitted subject to change in price, omissions, errors, prior sale or withdrawal without notice.



Hays Farm  
Development  
1,000+ Homes  
& Multifamily Units

Grissom High  
School  
1,952 Students

STAPLES

Publix

ROCK N ROLL  
SUSHI

WINGSTOP

CIRCLE K

Haysland Rd SW - 8,155 VPD

PET SUPPLIES PLUS

THE HOME DEPOT

LOWE'S

DQ

McDonald's

DUNKIN'

DUNKIN'

EXPRESS OIL CHANGE

40,203 VPD

Memorial Pkwy S - 46,257 VPD

Weatherly Rd SE - 16,082