

Amphitheater Road • Pelham, AL 35124

THE CANOPY AT OAK MTN

GROUND FLOOR COMMERCIAL SPACE
AVAILABLE



CONTACT:

ALYSSA WATERS | 205.271.7250 | awaters@southpace.com

STEPHANIE HILL | 205.271.7228 | shill@southpace.com



www.southpace.com
205-326-2222



RETAIL SPACE FOR LEASE @ THE CANOPY

Amphitheater Road
Pelham, AL 35124



RETAIL FOR LEASE

- ▶ "Where nature, community, hospitality, and entertainment come together in perfect harmony."
- ▶ Join Taco Mac, Cahaba Cycles, and Mountain High Outfitters!
- ▶ Up to 12,000 SF available with flexible layout options and endcap
- ▶ Part of a mixed-use development with 234 apartments ranging from 1-3 bedrooms
- ▶ Retail-only parking fronting the development (9:1000)
- ▶ Conveniently located at the intersection of I-65 and Hwy 119 off Oak Mountain State Park Road

CALL FOR PRICING

- ▶ Directly across the street from Oak Mountain Amphitheater and Pelham Civic Center on Amphitheater Road and at the front of Oak Mountain State Park
- ▶ Pelham Civic Center is home to the Birmingham Bull's Hockey Team and the newly announced National Indoor Soccer League (NISL) Magic City SC (coming January 2024)
- ▶ Oak Mountain State Park is Alabama's largest and most visited state park with soon to be 13,000 acres and over 800k visitors reported in 2020
- ▶ Included in the 115+ acre Pelham Arts & Entertainment District, established to grow culture, creativity, recreation, entertainment, and dining in Pelham



www.southpace.com

STEPHANIE HILL
shill@southpace.com
205.271.7228

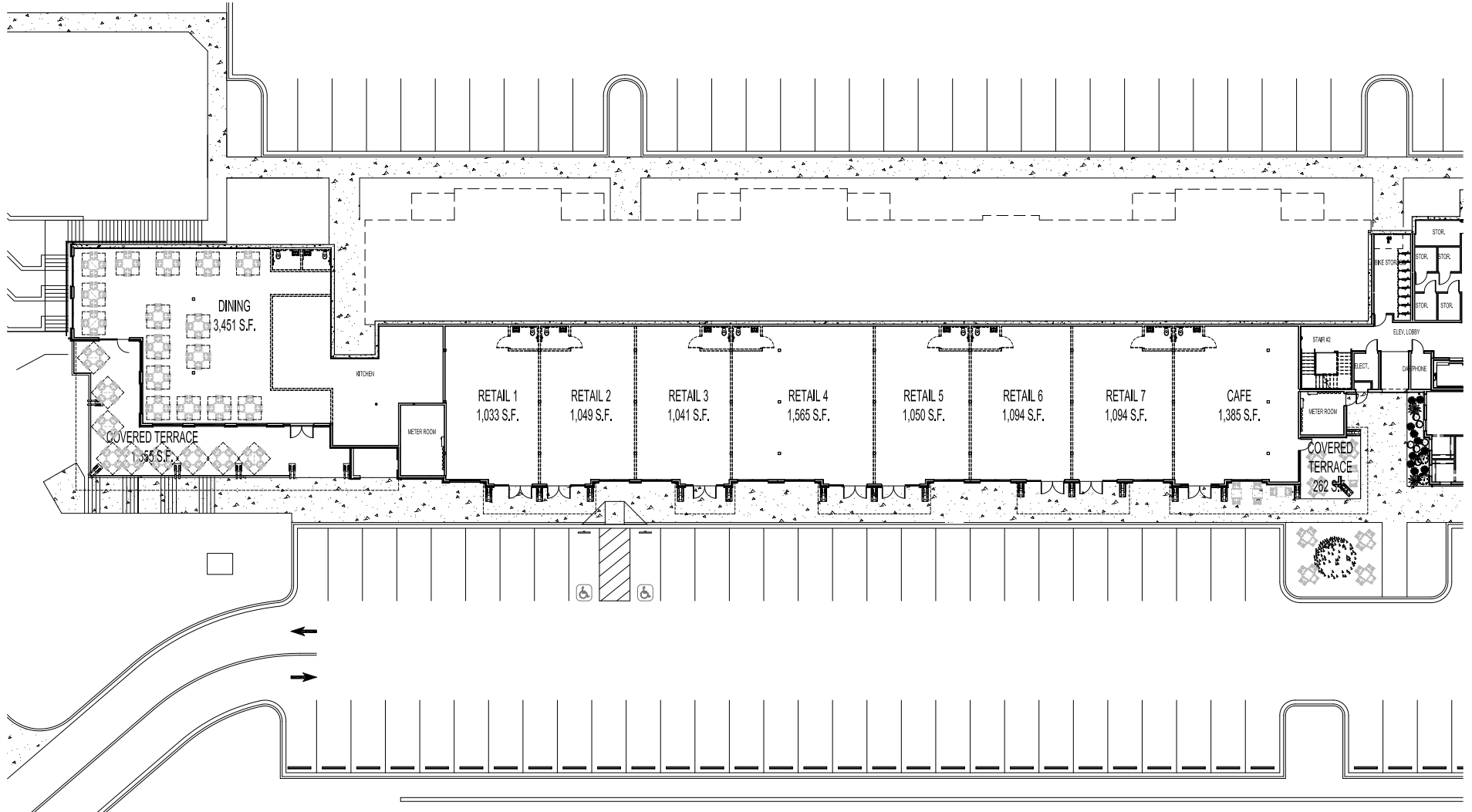
ALYSSA WATERS
awaters@southpace.com
205.271.7250

All information furnished with respect to the subject matter has been obtained from sources deemed reliable. No representation or warranty as to accuracy thereof is made and such information is submitted subject to change in price, omissions, errors, prior sale or withdrawal without notice.

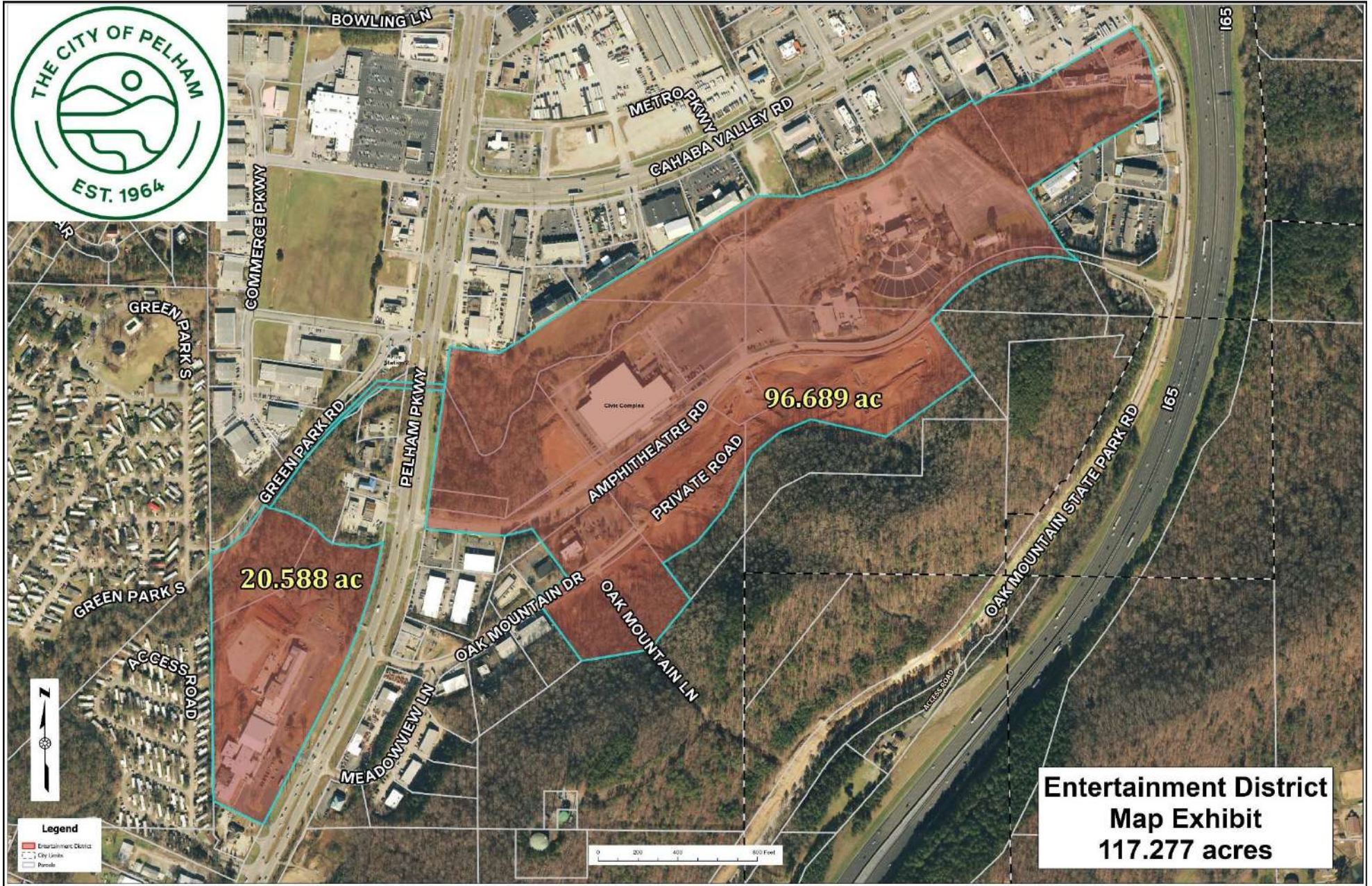


POTENTIAL SUITE SIZING

Flexible Suite Sizes Available



PELHAM ARTS & ENTERTAINMENT DISTRICT



**Entertainment District
Map Exhibit
117.277 acres**

OVERVIEW

AERIAL

PLANS

PHOTOS



All information furnished with respect to the subject matter has been obtained from sources deemed reliable. No representation or warranty as to accuracy thereof is made and such information is submitted subject to change in price, omissions, errors, prior sale or withdrawal without notice.

OVERVIEW

AERIAL

PLANS

PHOTOS



All information furnished with respect to the subject matter has been obtained from sources deemed reliable. No representation or warranty as to accuracy thereof is made and such information is submitted subject to change in price, omissions, errors, prior sale or withdrawal without notice.