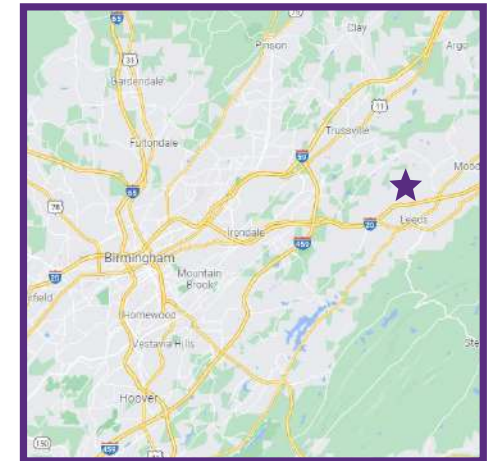
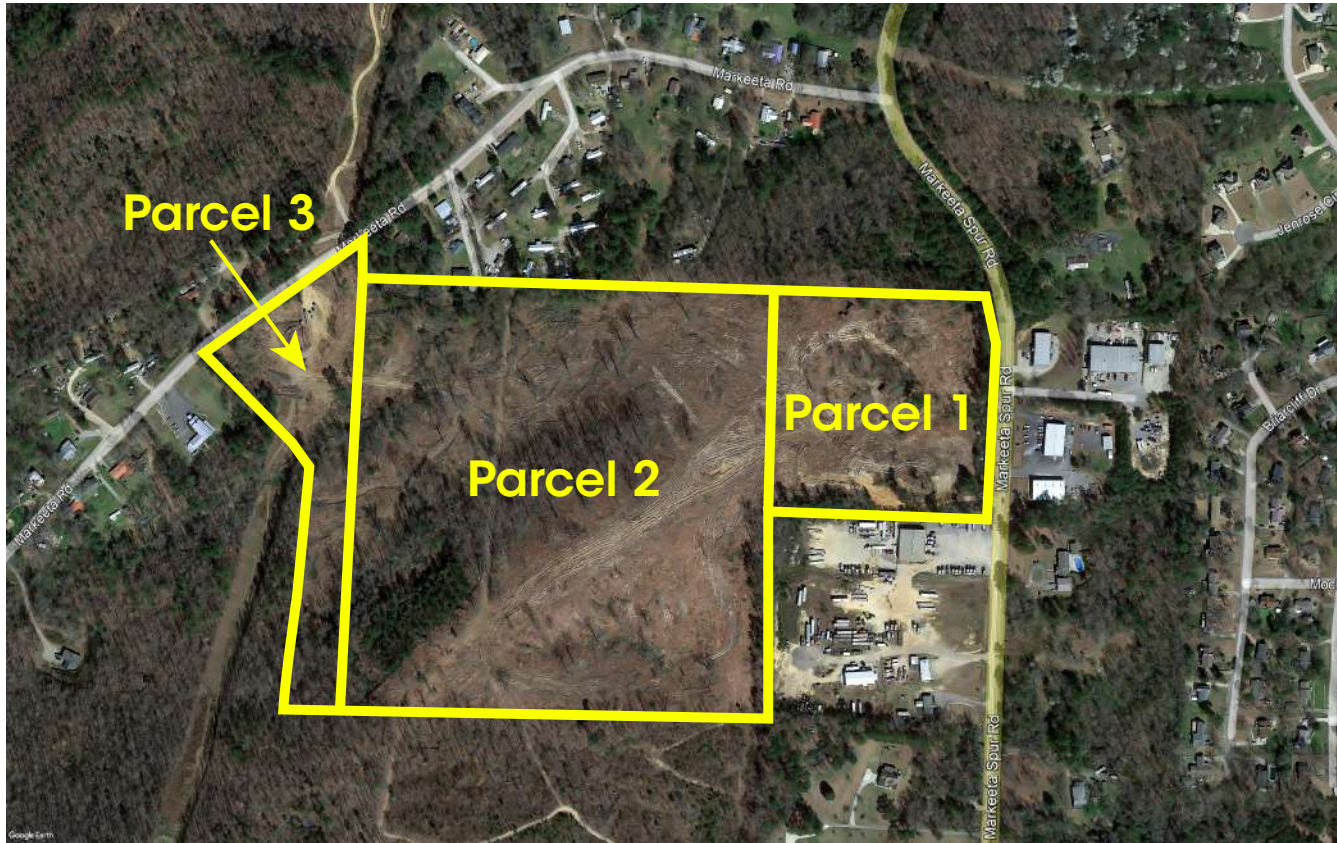


# RESIDENTIAL DEVELOPMENT LAND FOR SALE

1215 Markeeta Spur Road,  
Moody, AL 35004



## LAND FOR SALE

**SALE PRICE: \$1,240,000**

- ▶ 58-acre land site in St. Clair County
- ▶ Parcel 1 (26-02-03-0-001-052.000): 11 acres; Zoned I-1, City of Moody
- ▶ Parcel 2 (26-02-03-0-001-053.000): 40.59 acres; Zoned R-1, City of Moody
- ▶ Parcel 3 (26-02-04-0-001-015.000): 7.73 acres; Zoned Agricultural, City of Moody
- ▶ Good, convenient access to I-20 at Exit 144
- ▶ Excellent school system and city services in the city of Moody
- ▶ Owner will consider subdividing
- ▶ Ideal for residential development



SOUTHPACE PROPERTIES, INC.

**ANDY KAUFMANN**  
akaufmann@southpace.com  
205.271.7236

All information furnished with respect to the subject matter has been obtained from sources deemed reliable. No representation or warranty as to accuracy thereof is made and such information is submitted subject to change in price, omissions, errors, prior sale or withdrawal without notice.





All information furnished with respect to the subject matter has been obtained from sources deemed reliable. No representation or warranty as to accuracy thereof is made and such information is submitted subject to change in price, omissions, errors, prior sale or withdrawal without notice.



