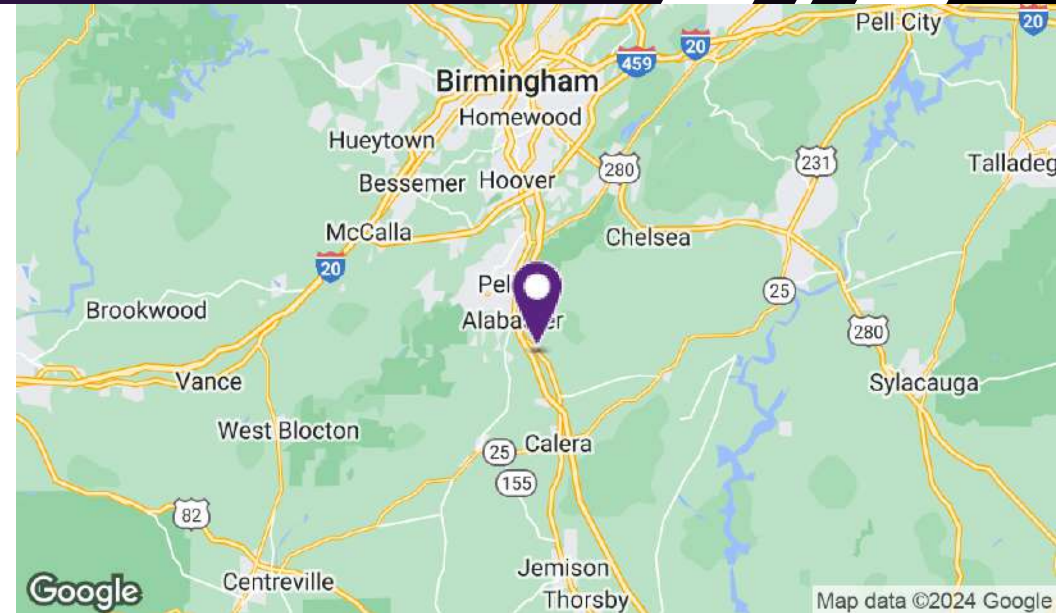


VACANT LAND FOR SALE

855 & 859 U.S. 31, ALABASTER, AL 35007



PROPERTY HIGHLIGHTS

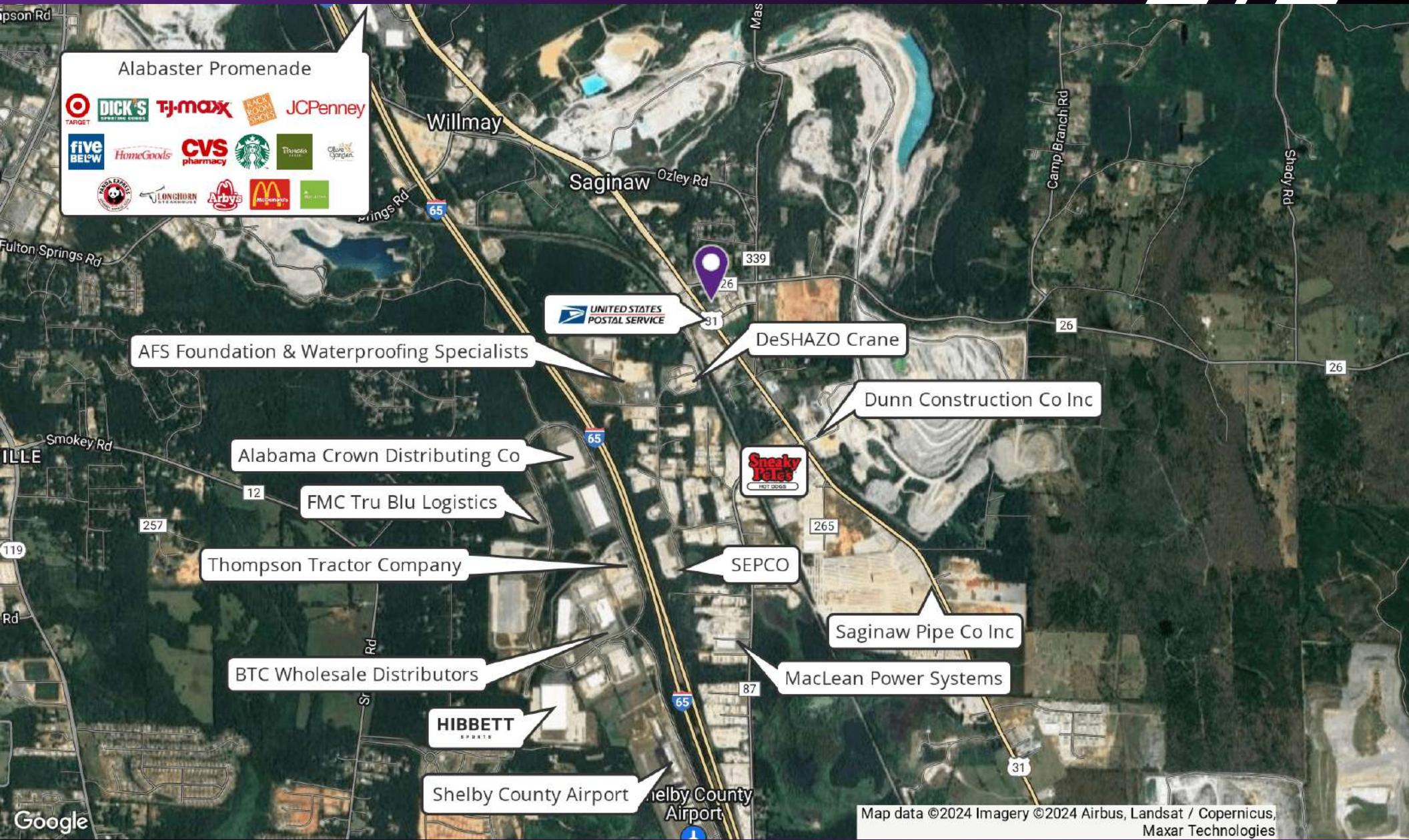
- Lot Dimensions: 87.30' x 233.40'
- Highway 31 frontage and access
- Surrounded by commercial development consisting of warehouses/office buildings bordering to the south and east
- Near the intersection of Highway 26 and Highway 31 to Columbiana
- Located in unincorporated Shelby County, a couple of miles south of Alabaster's retail corridor
- Located directly across from a retail strip center, Chevron C-Store, restaurant, bakery and U. S. Post Office

OFFERING SUMMARY

Sale Price:	\$299,900
Lot Size:	0.89 Acres

VACANT LAND FOR SALE

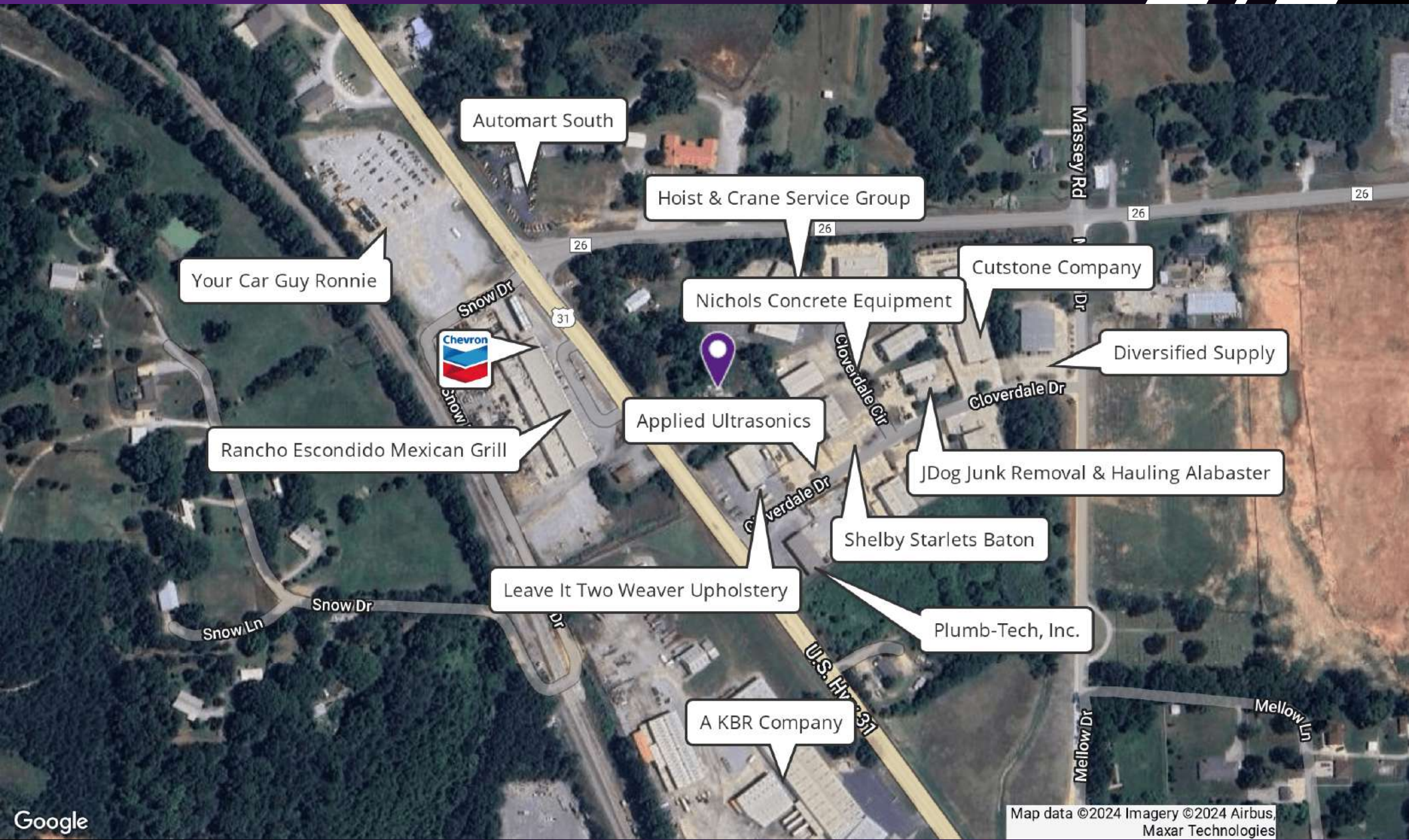
855 & 859 U.S. 31, ALABASTER, AL 35007



Map data ©2024 Imagery ©2024 Airbus, Landsat / Copernicus, Maxar Technologies

VACANT LAND FOR SALE

855 & 859 U.S. 31, ALABASTER, AL 35007



Google

Map data ©2024 Imagery ©2024 Airbus, Maxar Technologies

Andy Kaufmann Associate Broker 205.326.2222 akaufmann@southpace.com

All information furnished with respect to the subject matter has been obtained from sources deemed reliable. No representation or warranty as to accuracy thereof is made and such information is submitted subject to change in price, omissions, errors, prior sale or withdrawal without notice.

